

Accessing Files on Network Drives H: and J: from everywhere

Prerequisites

Connection to IHSVPN, guides see <https://www.ihs.ac.at/it> => Network Access

Connecting to the network drives with WinSCP

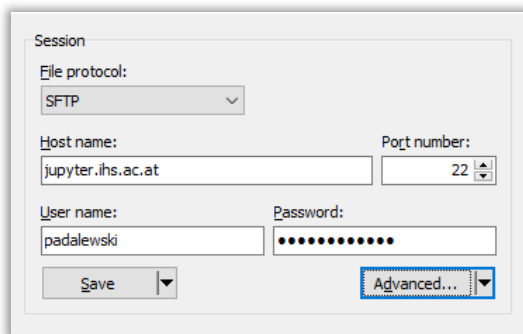
You may use any freely available SCP-program (SCP = “secure copy”), we recommend using “WinSCP”. (Downloadable from <http://winscp.net>.)

In order to access your personal files on **H:** with WinSCP, connect to **jupyter.ihs.ac.at** to find your files under the path **/win7/user/<IHS username>**.

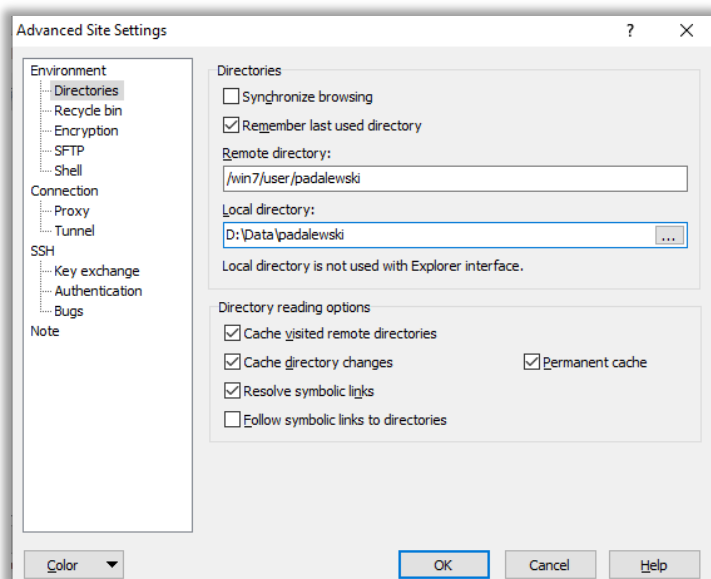
Group files on **J:** can be accessed under the path **/win7/group/<groupname>**, provided you have the appropriate access rights to that group.

Saving a reusable session to WinSCP

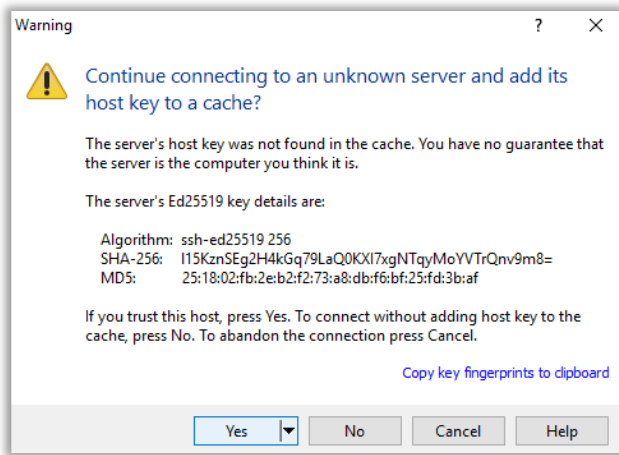
It is recommended that you’ll enter and later save the session(s) in the following way:



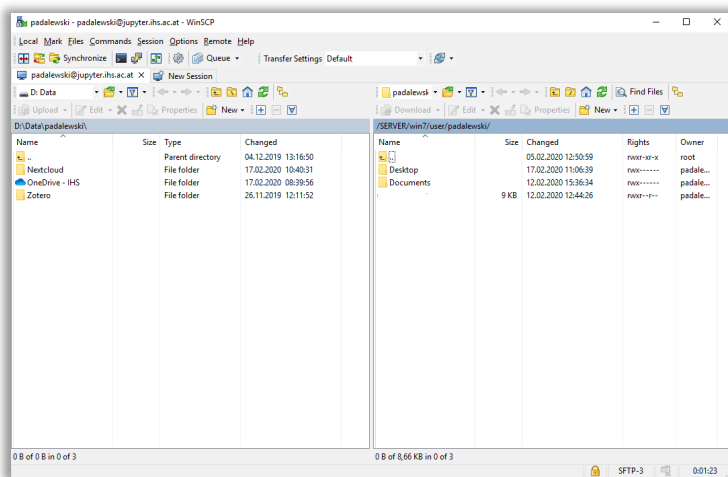
- Press “**New Site**”
- “**Host Name**”: jupyter.ihs.ac.at
“**Username**”: <IHS username>
“**Password**”: <IHS password>
- Click “**Advanced...**”



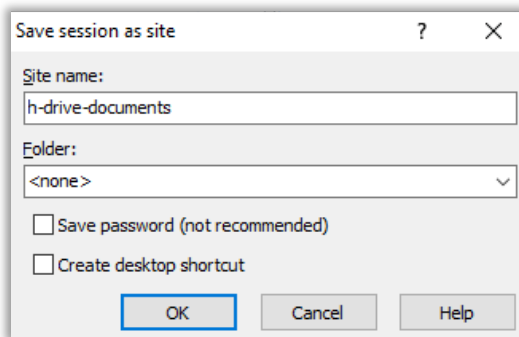
- Click “**Directories**” in the “**Environment**”-Menu.
- “**Remote directory**”:
/win7/user/<IHS username>
“**Local directory**”: i. e.
D:\Data\<IHS username>
- Press “**OK**”.



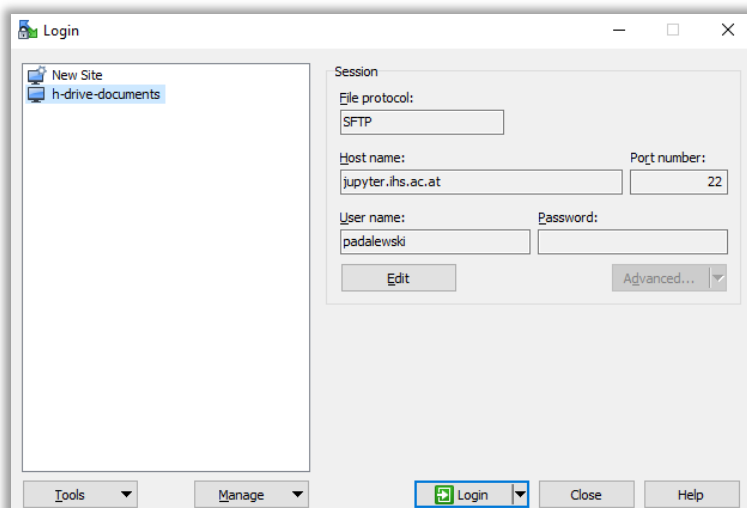
- Click the **“Login”** button.
- Accept the Warning and add the host key by clicking **“Yes”**.



- You will be directed to your network drive.
- You may now copy from/ to this directory by Drag & Drop.
- You may also use the menu: **“Files” – “Copy”**.



- Finally, save this session for later use: **“Session” – “Save Session as Site”** – enter the Site name (e. g. “h-drive-documents”)
- Click **OK**.
- Close the session: **“Session” – “Disconnect”**



- To open a saved session, **double-click “h-drive-documents”** in WinSCP.